

I. INTRO TO QUALITATIVE DATA ANALYSIS USING ATLAS.ti

II. CSSCR: TITUS – A TERMINAL SERVER

Valentina Petrova
Center for Social Science Computation and Research

Summer 2015

AGENDA

I. Intro to QDA using ATLAS.ti

1. CSSCR Services
2. ATLAS.ti – Intro to QDA
 - A. Why use QDA software?
 - B. Choosing your QDA program

C. ATLAS.ti features & terms

D. ATLAS.ti project (file) management

E. Example project in ATLAS.ti

F. Additional resources

II. Titus – Terminal Server

PART I: INTRO TO QDA USING ATALAS.ti





CSSCR is a resource center for the social sciences departments at the University of Washington. Most of our services are available to all students, faculty and staff. A few, such as reserving our computer labs for classes, are reserved for member departments. Each member department has a graduate student consultant on staff at CSSCR.

Center for Social Science Computation and Research
Box 353345
University of Washington
Seattle, WA
98195-3345
Phone: (206) 543-8110
Email: csscr@uw.edu



Service	Where	When
Consulting – on statistical software tools, qualitative analysis tools, data management, data access, and scientific publications.	Savery 119	Monday-Friday 8 a.m.-9 p.m. <i>Free, drop-in and by appointment, by phone</i>
Drop-in lab – 12 lab machines equipped with commonly used analytical software.	Savery 118	Monday-Friday 8 a.m.-9 p.m.
Classroom labs* – 20-seat and 40-seat classrooms plus instructor machine in each and projector, A/V equipment.	Savery 121 (20-seat) Savery 117 (40-seat)	Classes held here by reservation* (csscr@uw.edu). Used as drop-in at other times.
Secure data room – 2 computers used for data with special licensing requirements.	Savery 120	By appointment (csscr@uw.edu)

*Some services available only to [CSSCR member departments](#).



Service	Where	When
Classes – on statistical and qualitative software tools. Classes are 1-hour long and vary each quarter. Taught by CSSCR consultants.	Savery 117, 121	Schedule announced quarterly on website and newsletter.
Data archive – electronic data archive and Data Specialist on staff, Tina Tian .	Online; Savery 113 (inside main office)	Online – any time Archivist – Mon-Fri, 8 a.m.-12 p.m. and 1 p.m.-5 p.m.
Newsletter – quarterly electronic newsletter featuring classes, data archive updates, and other information.	Email list	To sign up, visit our website: csscr.washington.edu
Titus** – Windows Server 2012 R2 terminal server. When logged in, Titus users see a familiar Windows desktop environment (a session) where they can use statistical and qualitative analysis software packages.	Remote – log in from PC or Mac	Any time To sign up and see instructions for log-in, click here .

**Titus is primarily for UW College of Arts and Sciences faculty. See [eligibility criteria](#). If unsure, please contact us at csscr@uw.edu to describe your project and request access to Titus.

WHY USE QDA SOFTWARE?

- Manage large, complex data sets
- Code data with ease
- Conduct searches and visualizations
- Discover, test and describe patterns
- QDA software does not do the analysis for you, it facilitates the process
 - Examples: text or content analysis projects, literature reviews, inductive and deductive research of qualitative data (text, pictures, video, audio, etc.)

CHOOSING YOUR QDA SOFTWARE PACKAGE

Factor	ATLAS.ti	Dedoose.com	TAMS Analyzer
Source	www.atlasti.com	www.dedoose.com	http://tamsys.sourceforge.net/
Cost	\$99 student license (\$670 single educational license) or free @ CSSCR* or CSDE*	\$10.95/month student rate (some variation)	free
Platform	PC*, Mac – newer, not as robust (+iPad and Android apps – limited functionality)	Any (web-based)	Mac
Data/file types	Any (text, audio, video, images)	Almost any (problems with PDFs, images, etc.)	Text (and now PDFs, videos, images)
Team	Yes, but complex set-up	Yes – best for this	(Yes, but not great)
Reports	Robust	Robust & colorful	Functional
Ease of use	Drop-down menus UI, manuals, CSSCR support, free online videos, book, forum	Web-based UI, some online videos, some CSSCR support, paid company support	Bare-bones UI, user manuals online, FB page for Q&A

ACCESSING ATLAS.ti AT UW

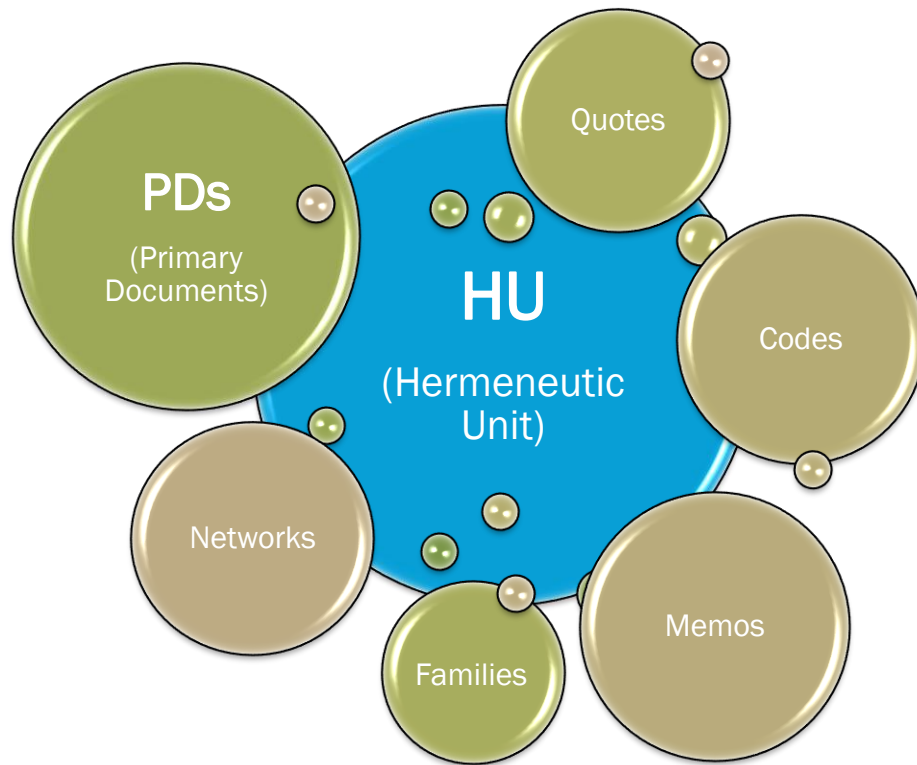
CSSCR

- **Computer labs**
 - Drop-in (Savery 118)
 - 20-seat classroom (Savery 121)
 - 40-seat classroom (Savery 117)
- Titus
 - Remote access (anywhere with an Internet connection)

CSD E

- Terminal Servers
 - Remote access (anywhere with an Internet connection)

ATLAS.ti FEATURES



ATLAS.ti PROJECT MANAGEMENT

- Work from copies of your files
- Stay organized (all PDs in one project folder)
- New in v7: project management library system (above rules are still a good habit, but no longer “necessary”):
 - See “Data Management in ATLAS.ti 7.5 and higher”: <http://atlasti.com/manuals-docs/>
 - Library Manager
 - Documents->Data Source Management->Open Library Manager
 - Adding primary documents (PDs) – any text version (doc(x), txt, rtf) and many other types of files (video, audio, images, etc.)
 - Be aware of sensitive/private info when using a public computer
 - Hermeneutic Unit file <.hpr7>
 - **Copy Bundle*** (under Project and Tools menus) <.atlcB>

*Back up your HU using the Copy Bundle function (this will include all PDs from the Library as well as your coding), not by saving or copying the HU file alone (that just won't work).

EXAMPLE PROJECT IN ATLAS.ti

- **Adding PDs**
 - Unit of analysis
- **Data segmentation**
 - Creating free quotations
- **Coding data**
 - Importing a code list (deductive)
 - Open coding (inductive)
 - Searching
- **Families of:**
 - PDs
 - Codes
 - Memos
- **Memos & Comments**
- **Visualization/Network Views**
- **Copy Bundle function**
- **Generating reports/analysis tools:**
 - Word Cruncher
 - Co-occurrence tool
 - Query tool
 - Codes-PDs Table
- **Team Work**
- **Importing Survey Data**
- **Google Earth**

RESOURCES

ATLAS.ti websites:

ATLAS.ti main site: www.atlasti.com

Forum: forum.atlasti.com

Manuals: <http://atlasti.com/manuals-docs/>

YouTube: www.youtube.com/user/atlasti01

Blog: <http://www.blog.atlasti.com/>

Webinars: www.atlasti.com/webinars.html

Methods webinars:

<http://www.iiqm.ualberta.ca/ResearchTraining/WebinarSeries.aspx>

RESOURCES: GOOGLE EARTH & TEAM WORK

Videos (1-hour, on the ATLAS.ti YouTube channel):

Geo-coding using Google Earth:

https://www.youtube.com/watch?v=1oJ_N0nKJfY

Team work: <https://www.youtube.com/watch?v=4AXrrtuJEzM>

Also see the ATLAS.ti manual, “ATLAS.ti 7 (Windows) – Full Manual”

ADDITIONAL RESOURCES

Books:

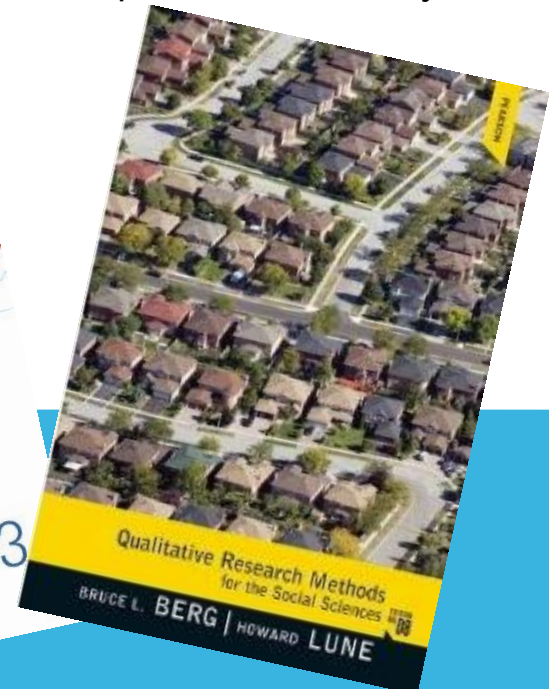
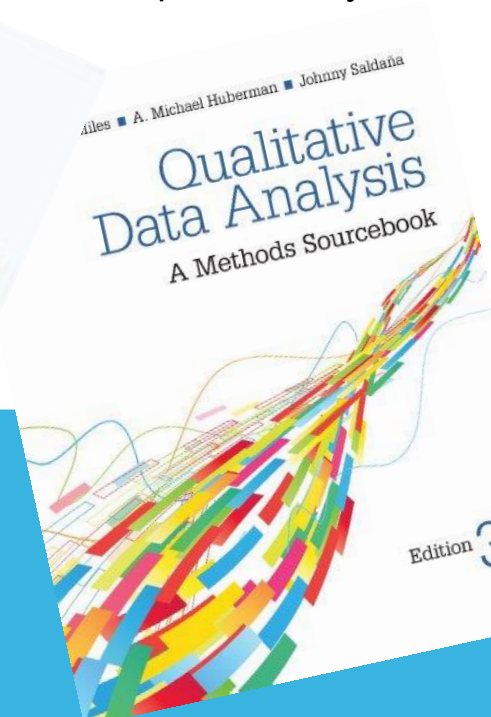
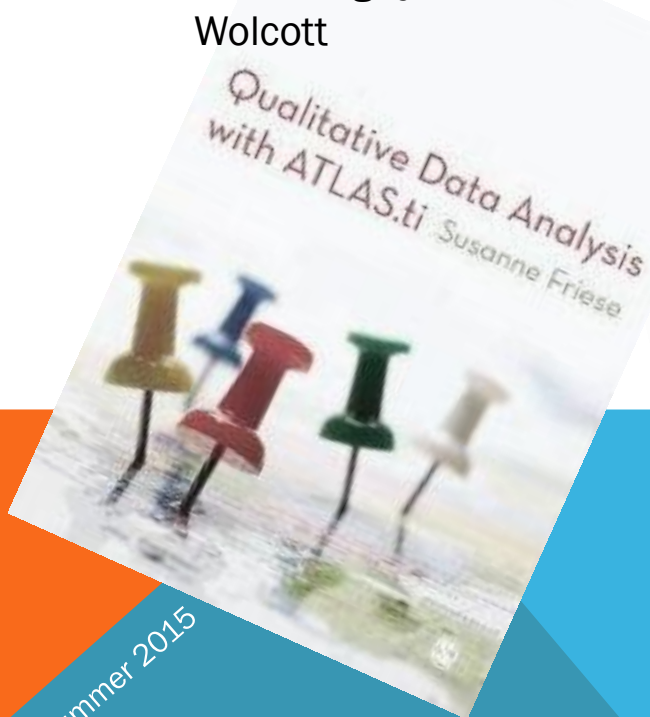
“Qualitative Data Analysis with ATLAS.ti” – Susanne Frieze

“Qualitative Data Analysis: A Methods Sourcebook” – Miles, Huberman, Saldaña

“Qualitative Research Methods for the Social Sciences” – Bruce Berg & Howard Lune

“Using Software in Qualitative Research: A Step-by-Step Guide” – Silver & Lewins

“Transforming Qualitative Data: Description, Analysis, and Interpretation” – Harry Wolcott



Summer 2015

BREAK

Questions?

Valentina Petrova

Master in Public Administration

Master of Arts in International Studies

petrova@uw.edu

[linkedin.com/in/valentinapetrova](https://www.linkedin.com/in/valentinapetrova)

PART II: TITUS – A TERMINAL SERVER



TITUS: WINDOWS TERMINAL SERVER @ CSSCR

How do I create a Titus account?

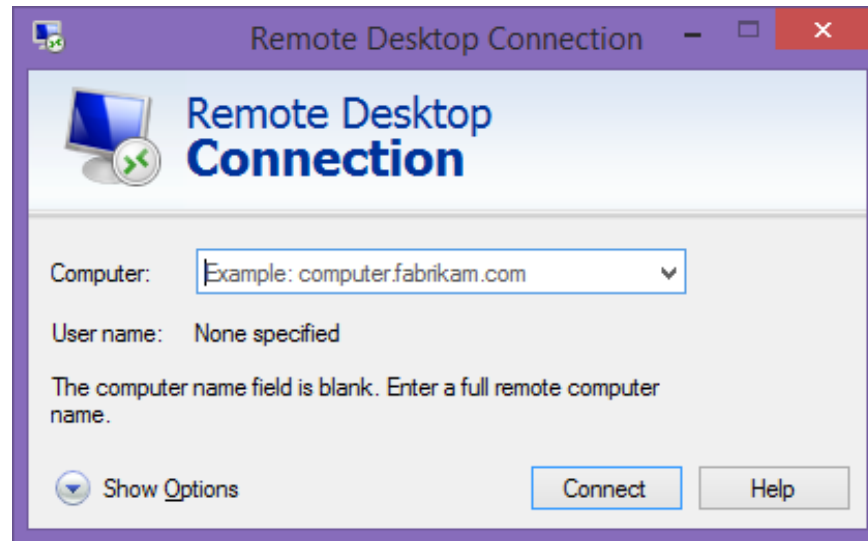
Send an email to csscr@uw.edu with the subject line: "Titus account request". In the body of the email, please include:

- Name
- Department affiliation
- UW NetID
- Project description
- Software you tend to work with
- Size of data (if known)
- Collaborators (if any) - names and UW NetIDs

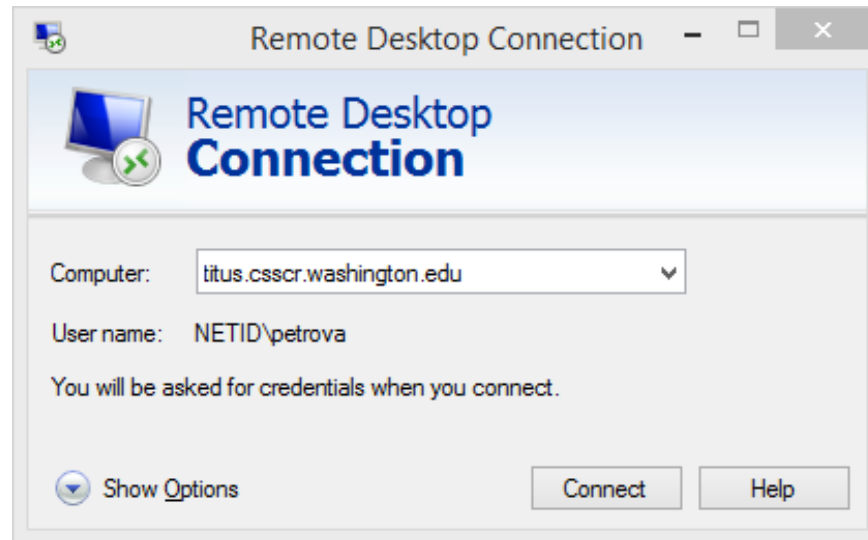
What software is available on Titus?

A list of installed software is available [here](#).

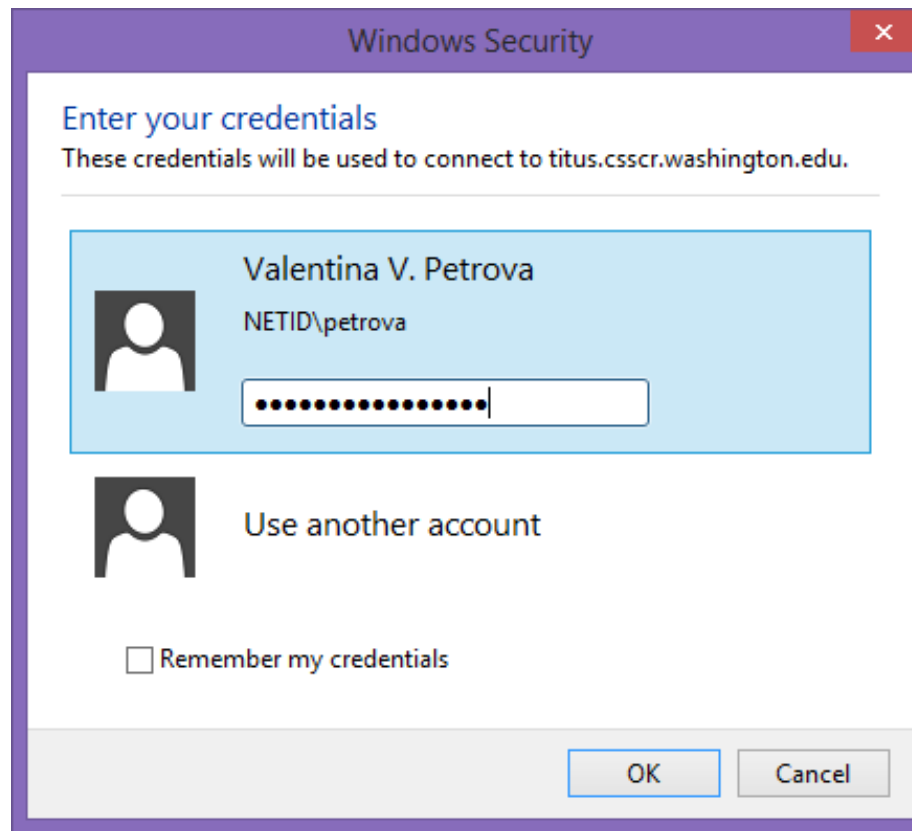
TITUS – LOGGING IN ON A PC



TITUS – LOGGING IN ON A PC



TITUS – LOGGING IN ON A PC



TITUS – WHERE TO SAVE YOUR WORK

Drive:	What is it?	Use it for:	Private?	Share-able?	Backed-up?
C:	Local storage on Titus.	This is the default way to store data and projects on Titus. To access this information outside of the Titus remote environment, you need to copy your files onto a cloud service (such as Dropbox, Google Docs or Microsoft OneDrive) or email them to yourself.	Yes	No	Yes
U:	U Drive: A storage service, similar to Dropbox, that is offered by UW IT and is available to students, faculty and staff with UW NetID log-in.	This is a good option for backing up files and for being able to access your data and projects outside of Titus as well as inside it. It will soon be built in and available when you login.	Yes	No	Yes
D:	Another server CSSCR runs that is connected to Titus.	If you have data that requires more than 20 GB of storage , this drive is a good option. To set up a folder for yourself on the D: drive, send a request to Jeff Rudd at csscr@uw.edu and include your UW NetID plus a brief description of your project and why you need extra storage space.	Yes	Yes	Yes

Q&A

Valentina Petrova
Master in Public Administration
Master of Arts in International Studies
petrova@uw.edu
[linkedin.com/in/valentinapetrova](https://www.linkedin.com/in/valentinapetrova)